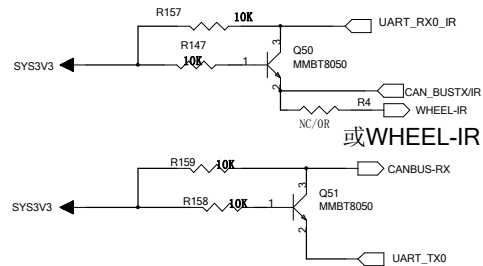
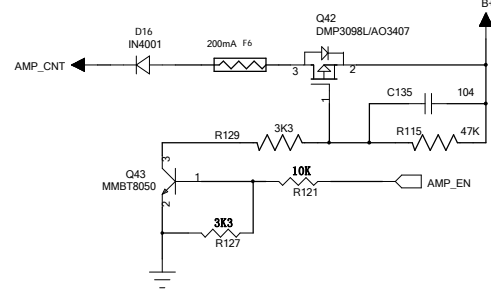


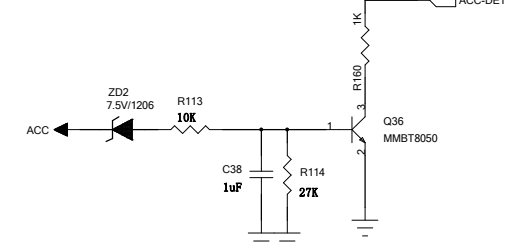
CANBOX



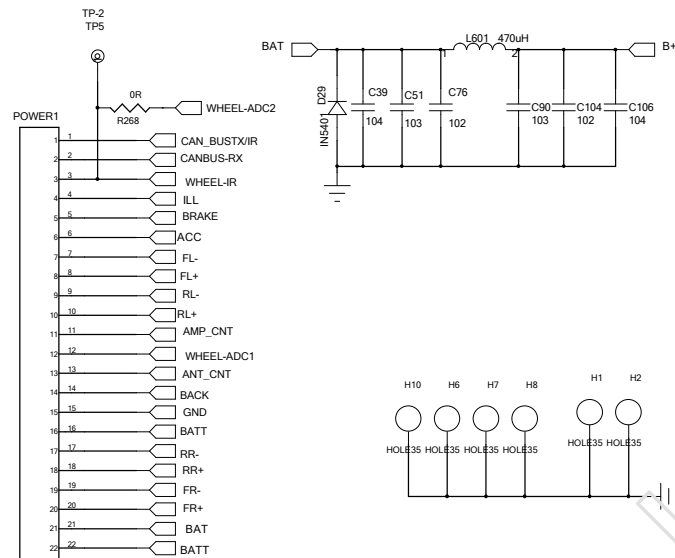
APM-POW



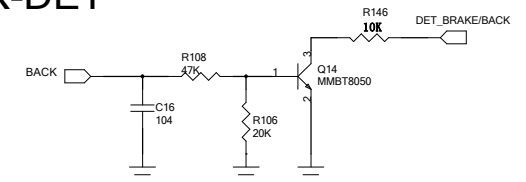
ACC-DET



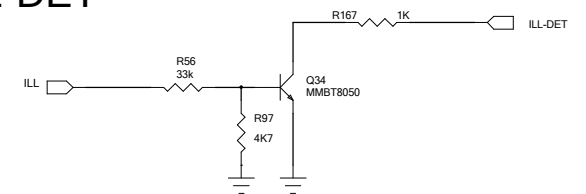
ISO PLUT



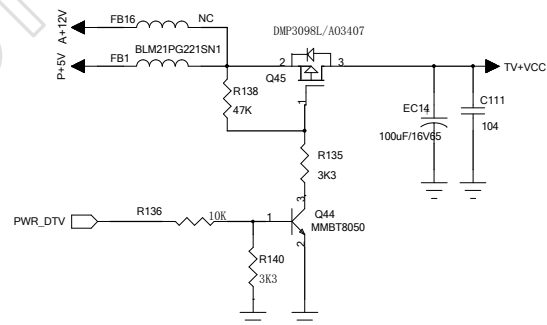
BACK-DET



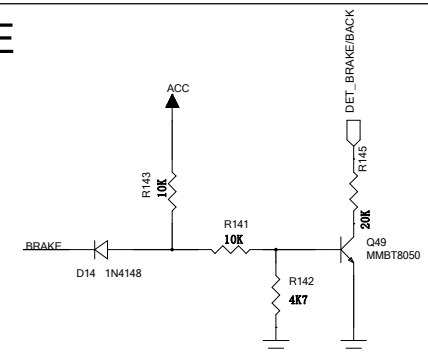
ILL-DET



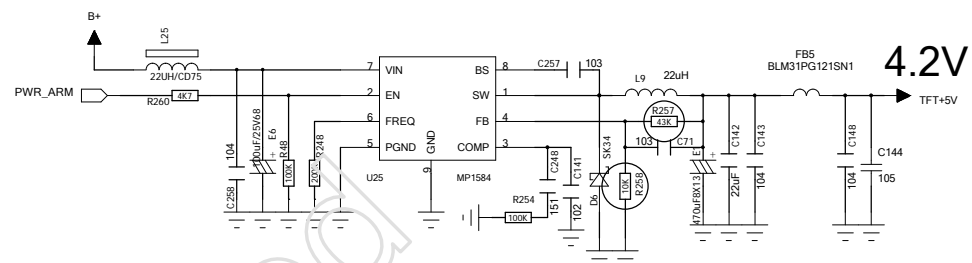
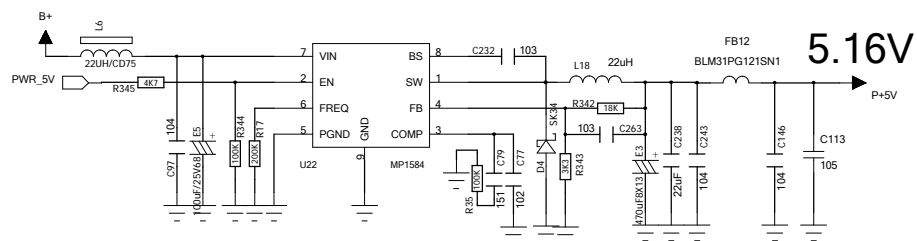
TV_VCC



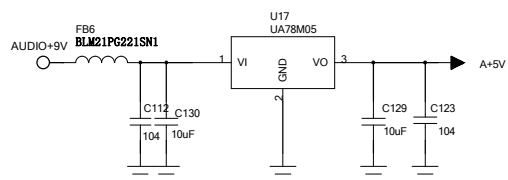
BRAKE



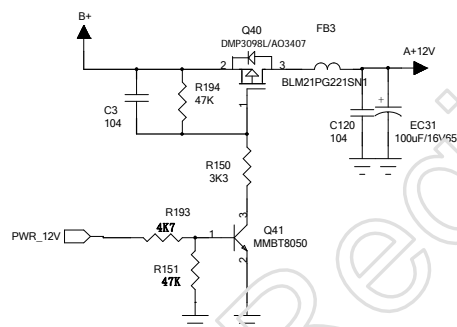
DC-DC



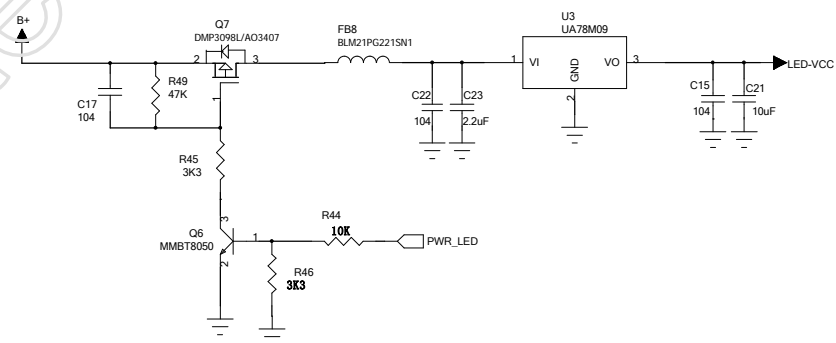
A 5V



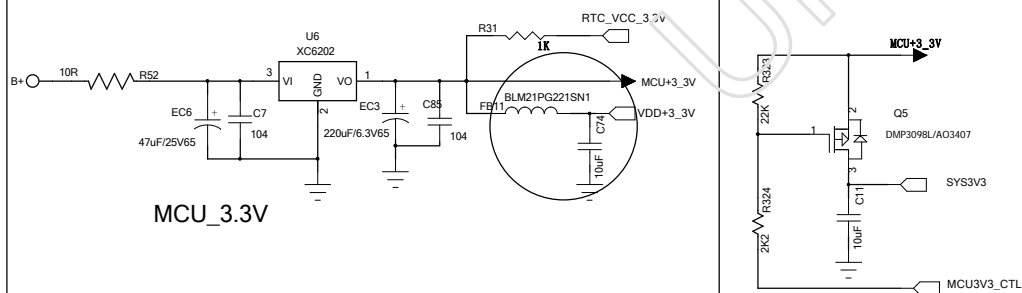
A+12V



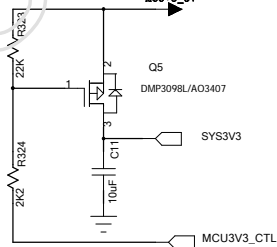
LAMP PWR



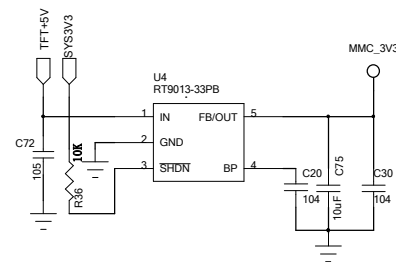
MCU 3.3V



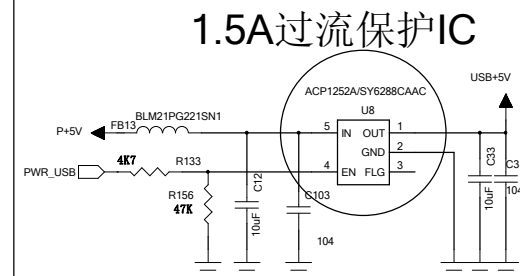
~~SYS3.3V~~

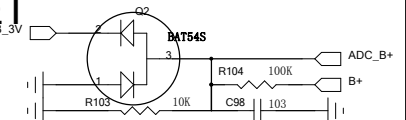


SDMMC VCC

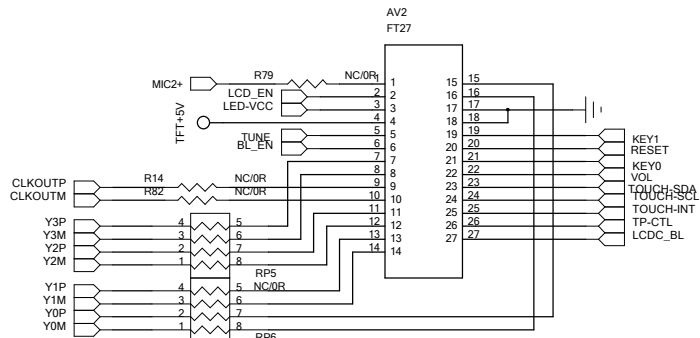
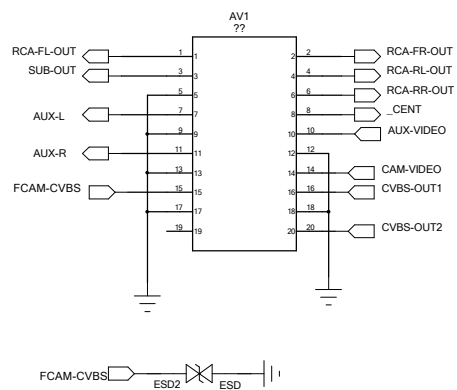


USB VCC

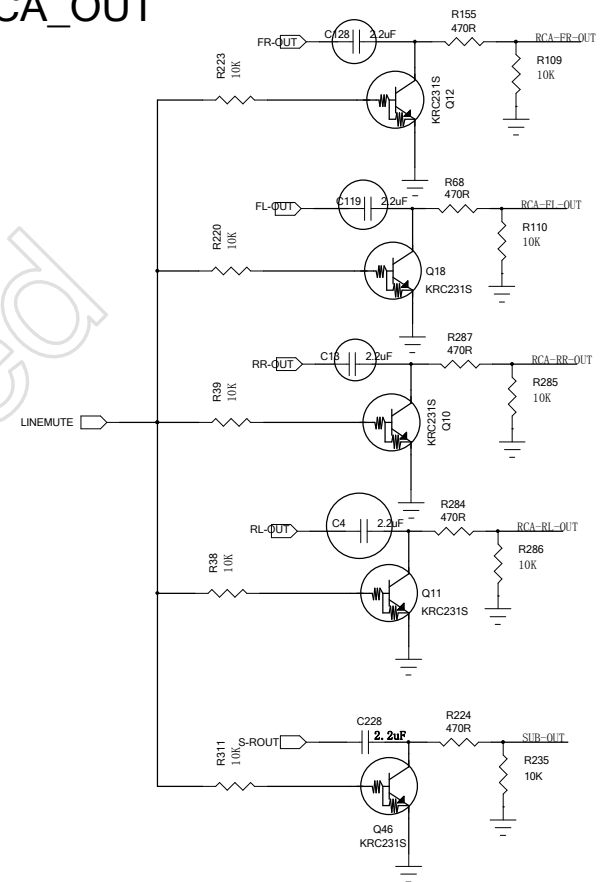




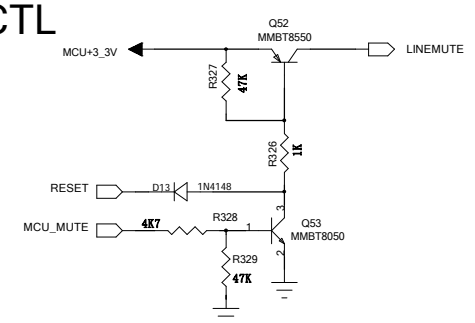
AV PUT



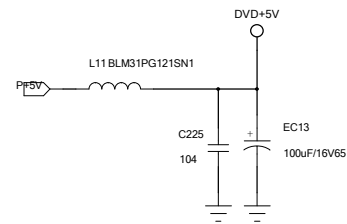
RCA_OUT



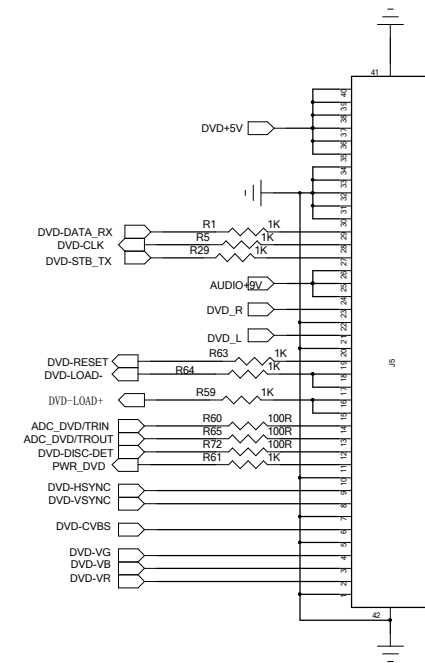
MUTE_CTL



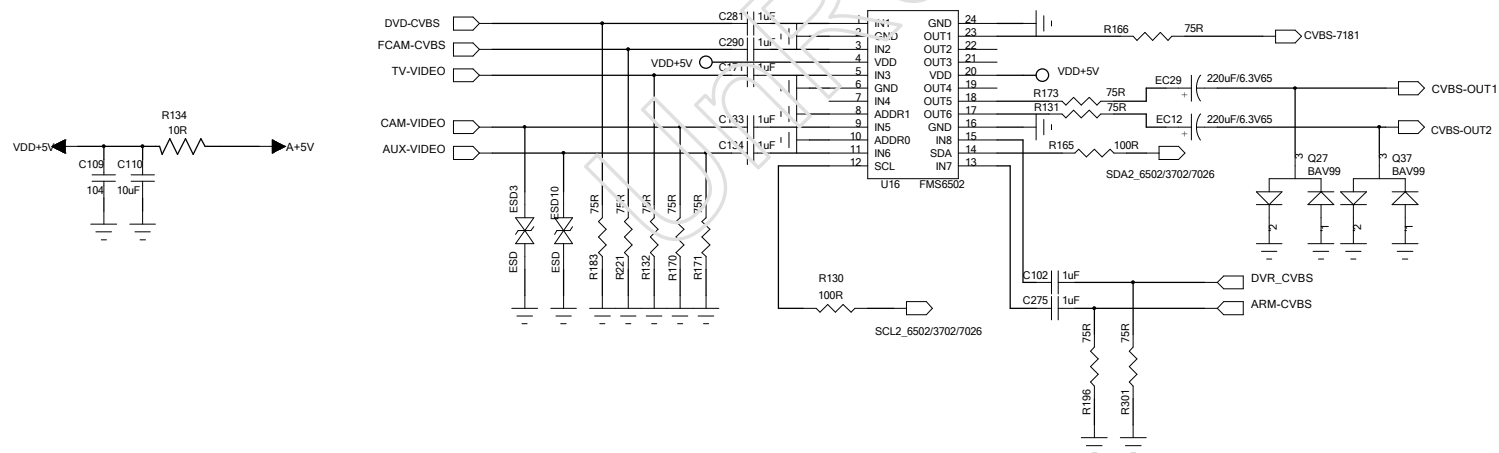
DVD_PWR



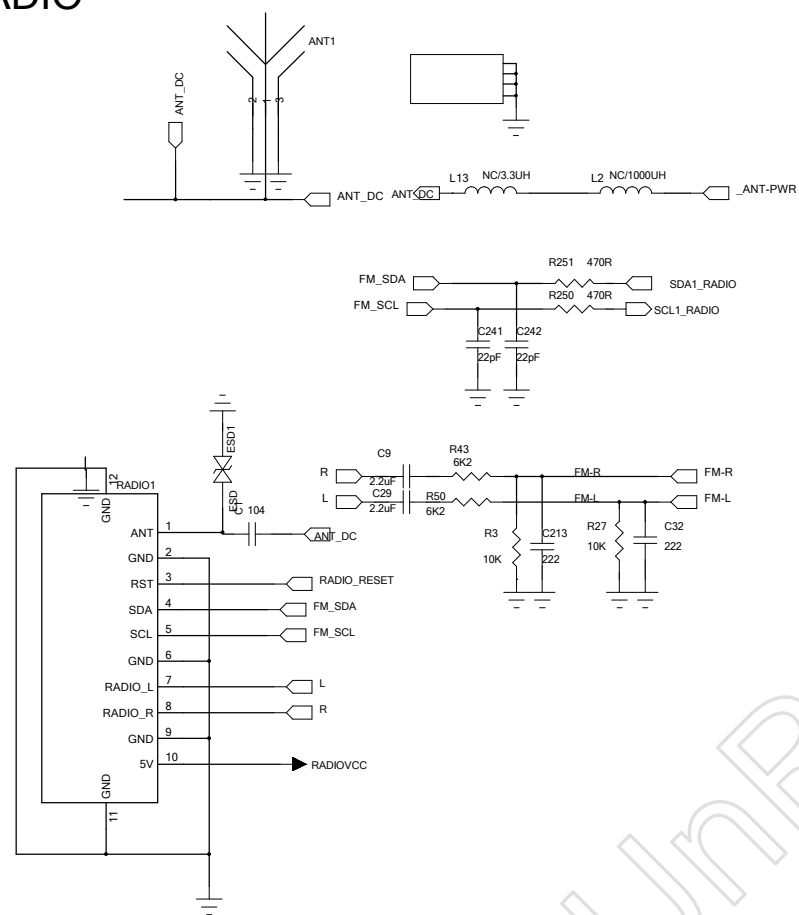
DVD_PUT



VIDEO_SW



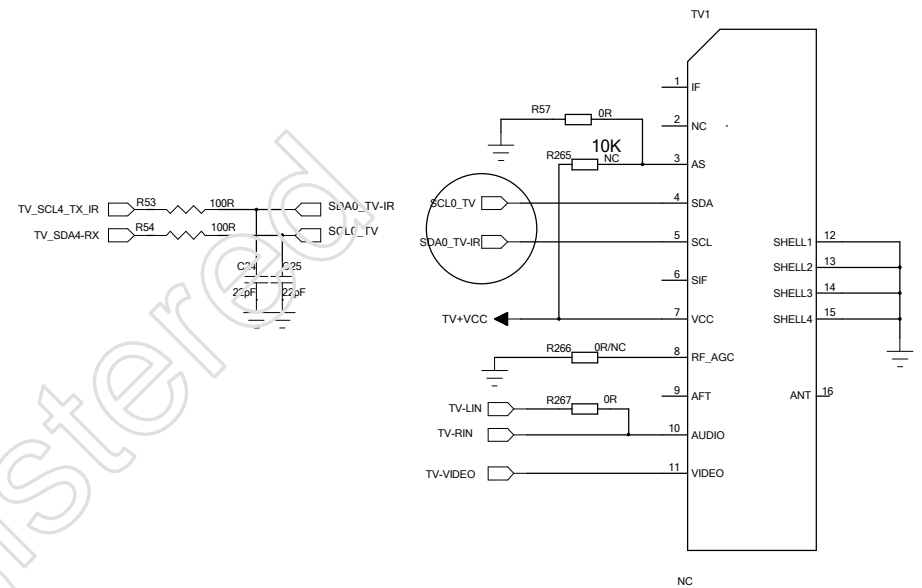
RADIO



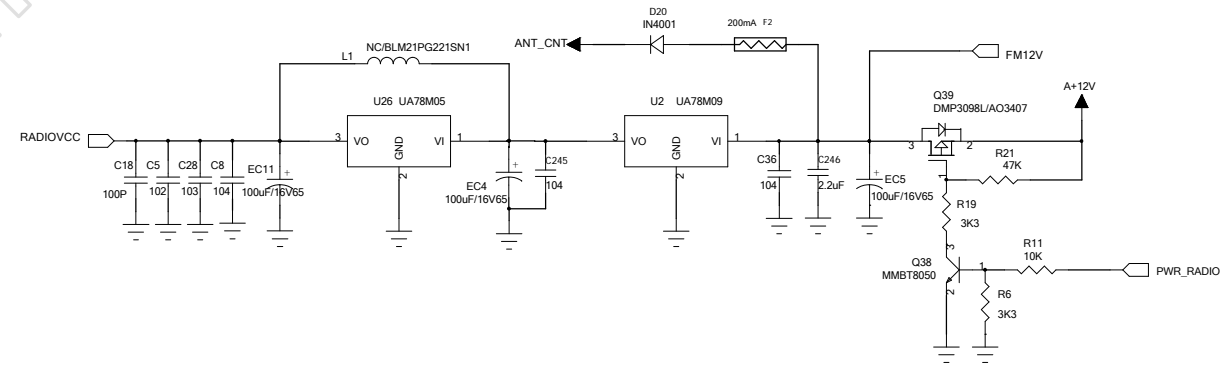
有源天线



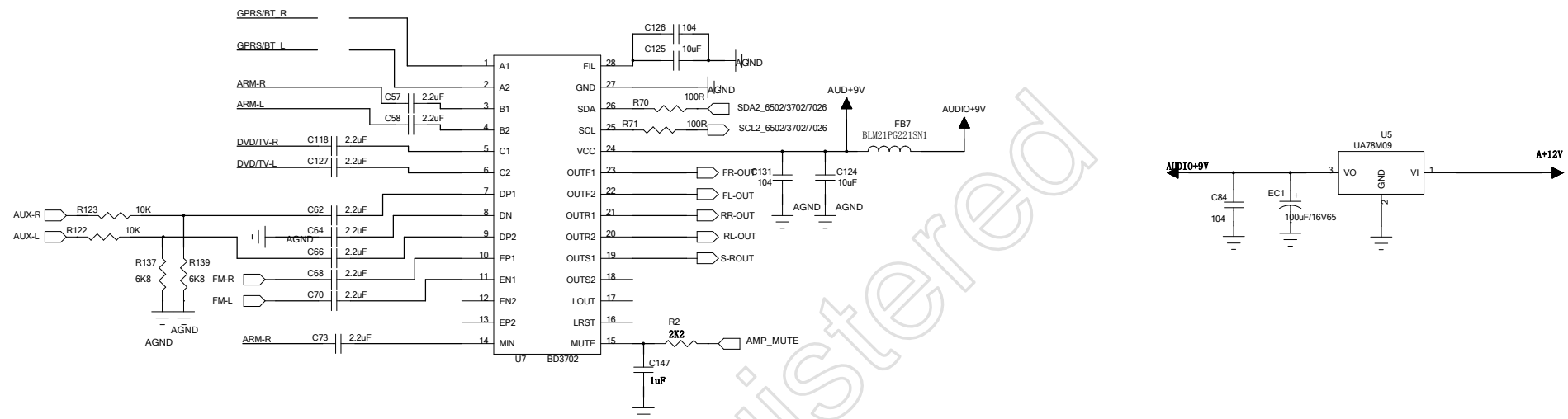
TV



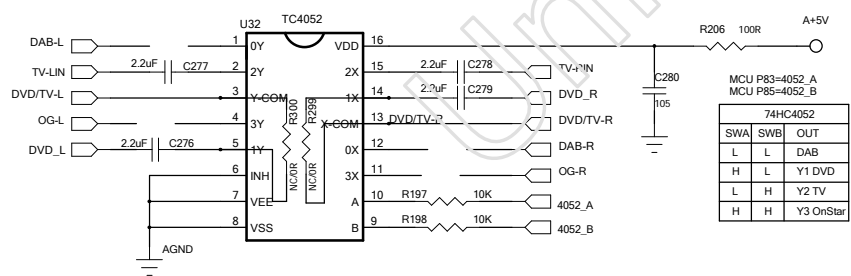
RADIO_PWR



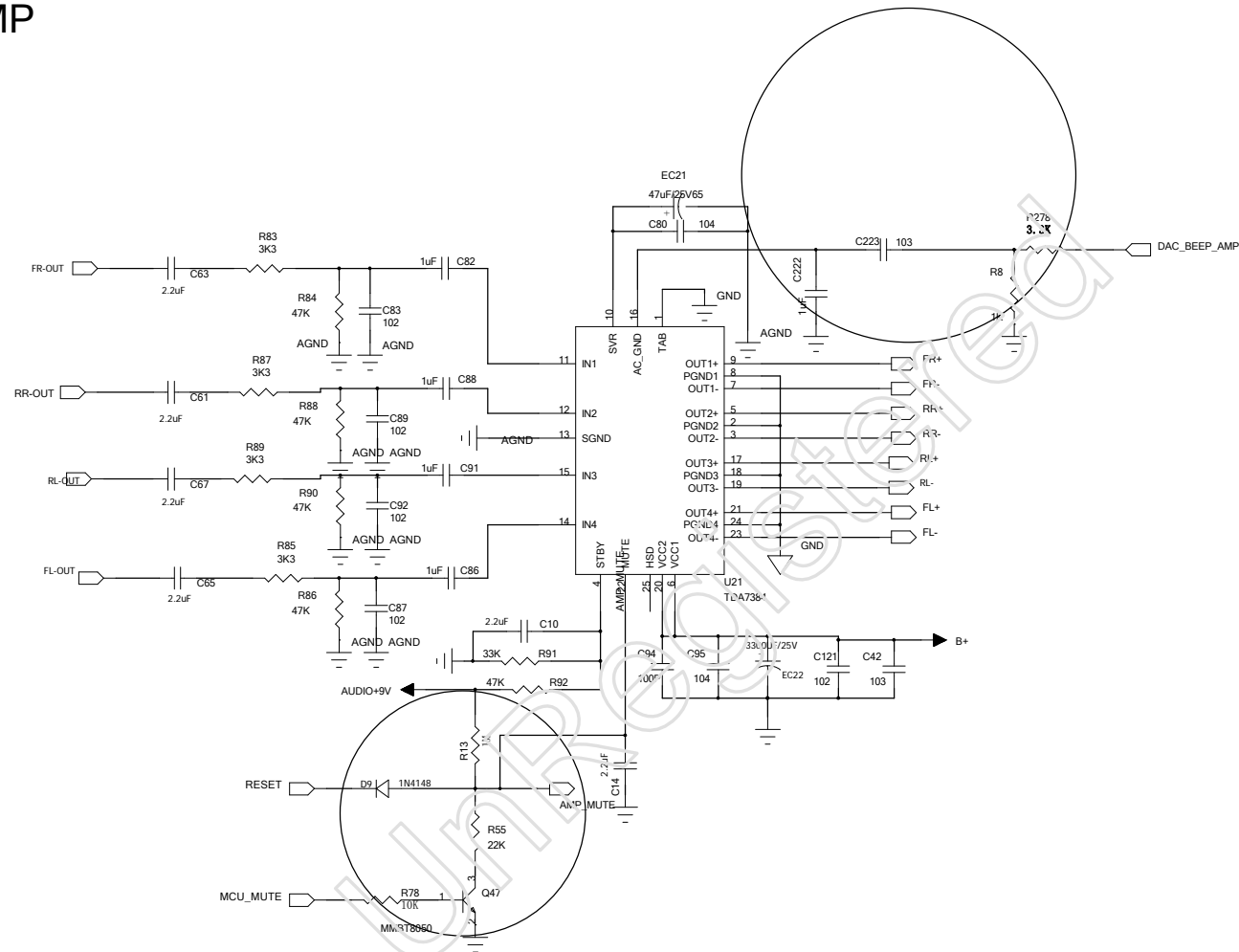
AUDIO



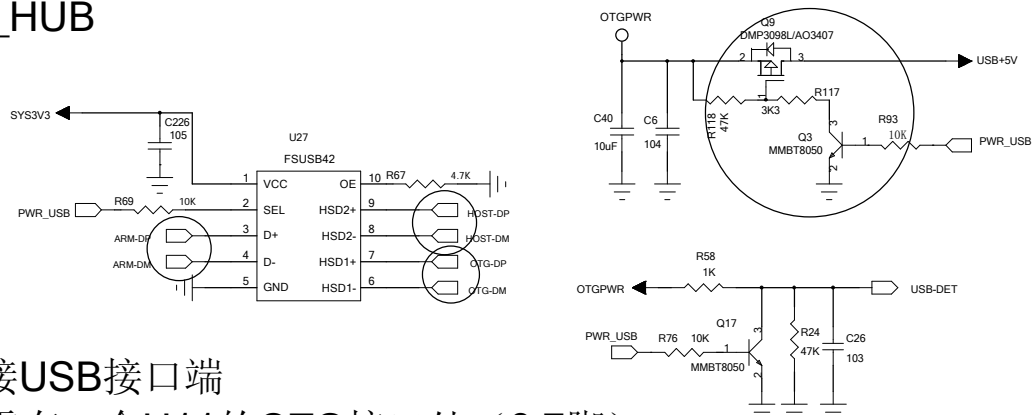
AUDIO_SW



POWER_AMP

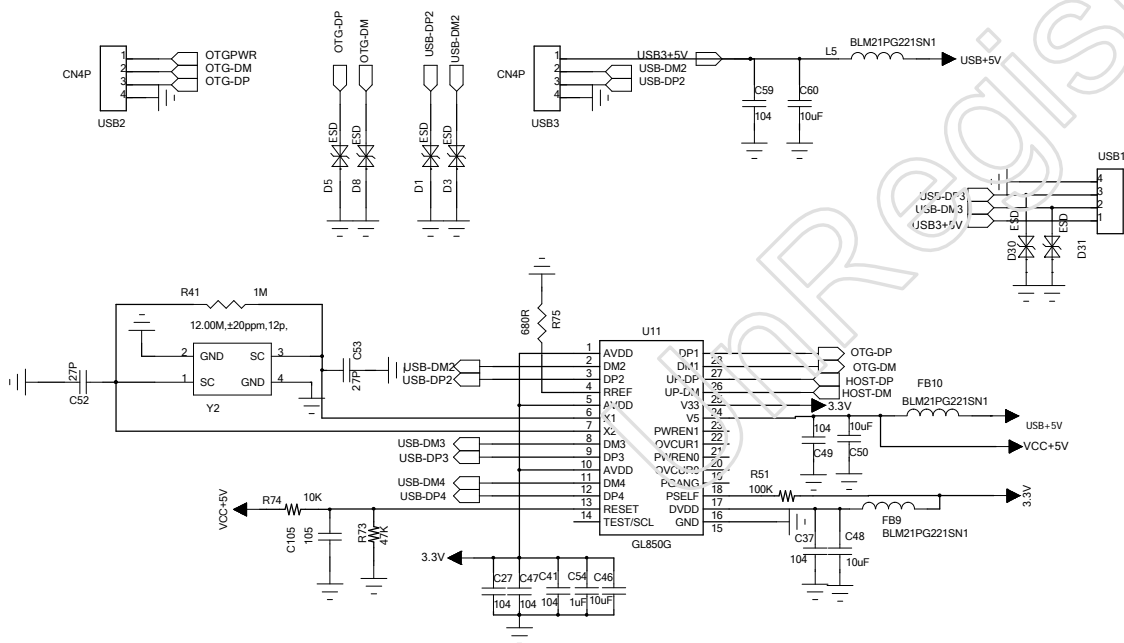


USB_HUB

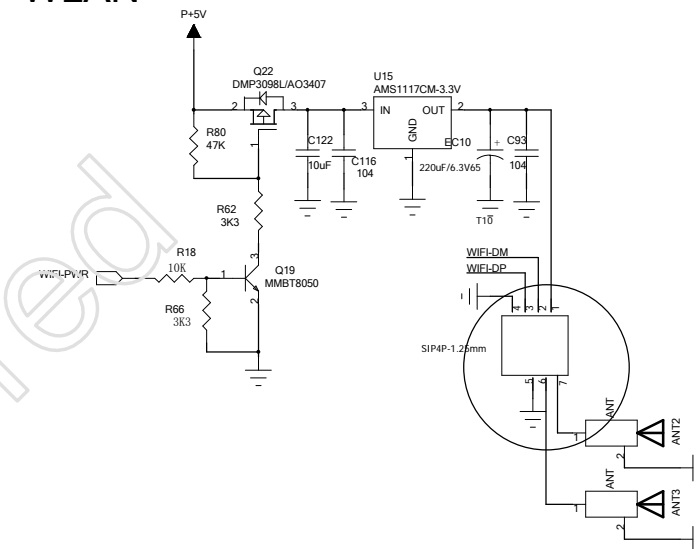


外接USB接口端
必需有一个U11的OTG接口处 (6,7脚)

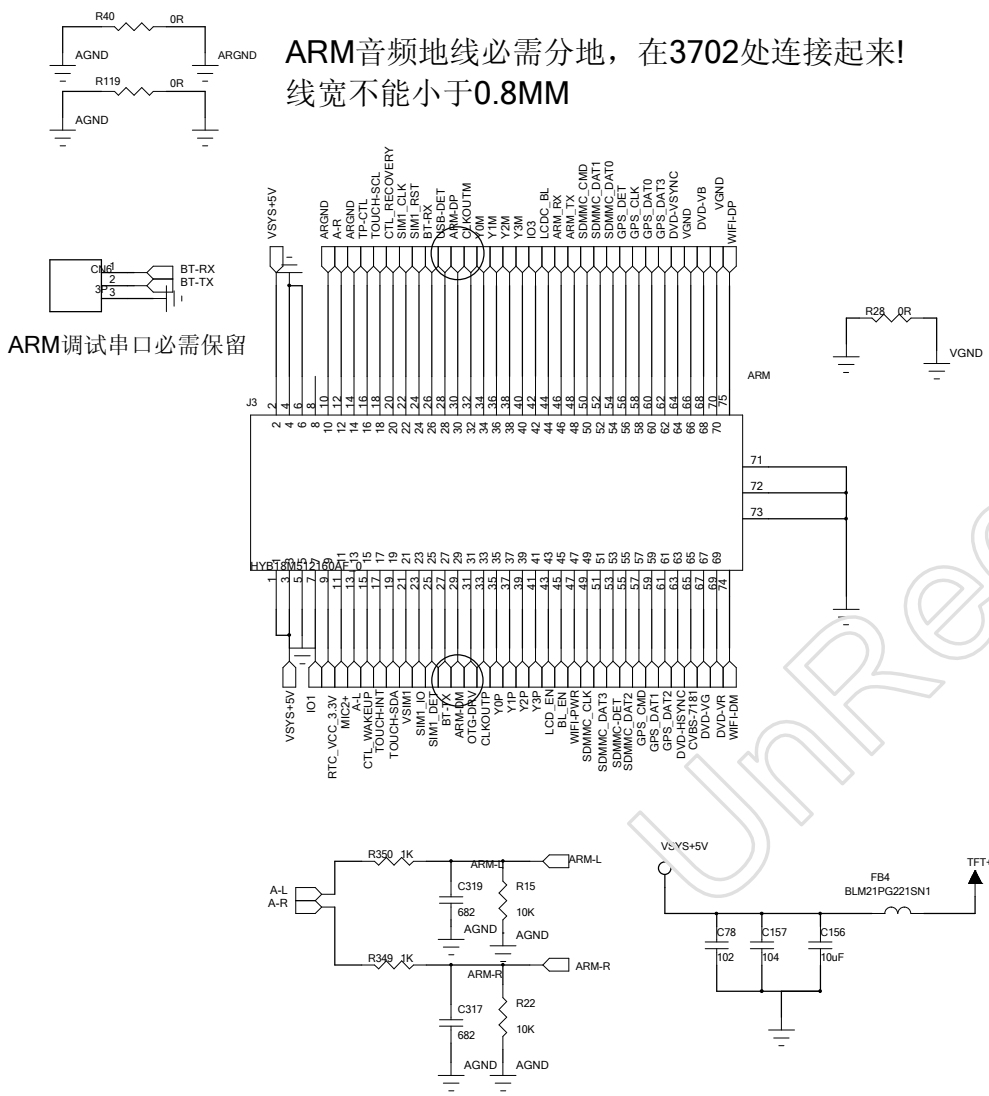
默认OTG接口接到HUB的DP1



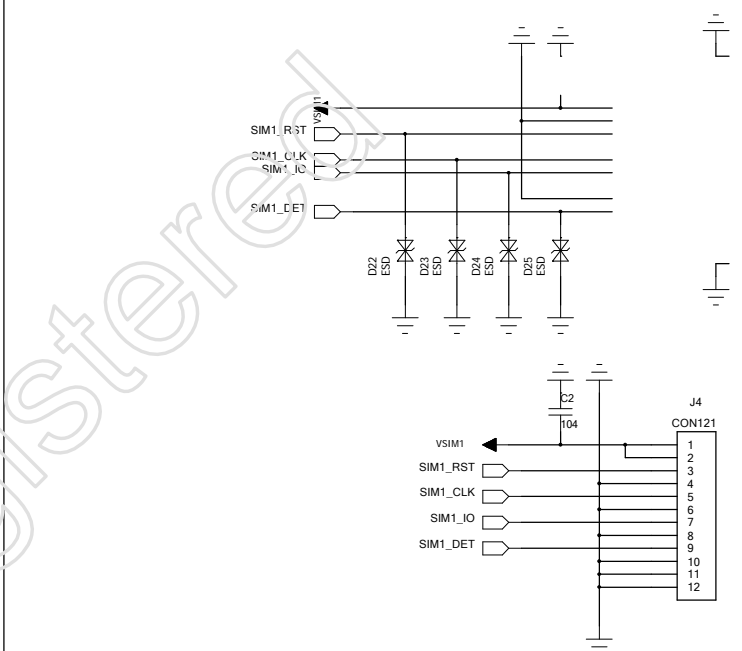
WLAN



ARM



3G_CARD



TFT

