

6 K2P 6" K2 Power® woofer

(165 K2P kit: TN 52 + 6K2P + Fi 165 K2P)

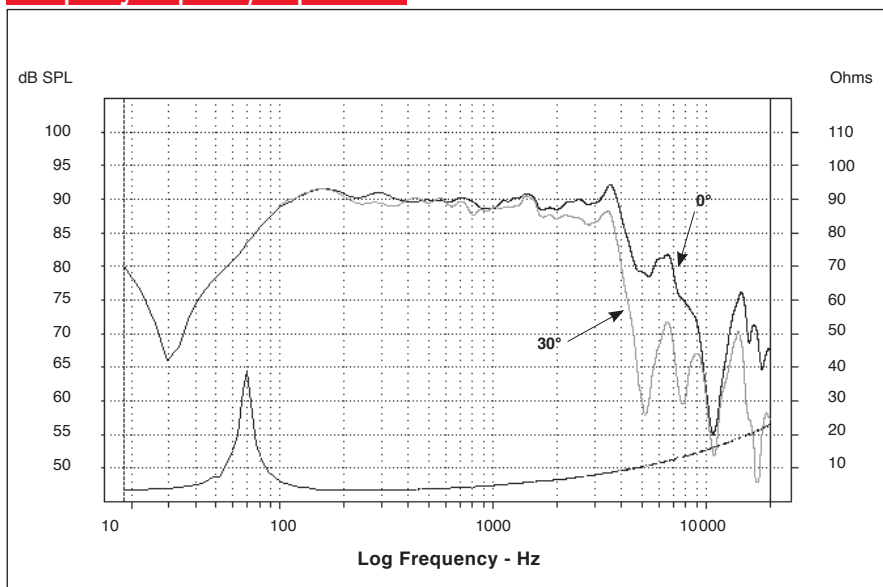
(165 K3P kit: TN 52 + 6K2P + 6K3P + Fi 165 K2P + Fi 165 KB)



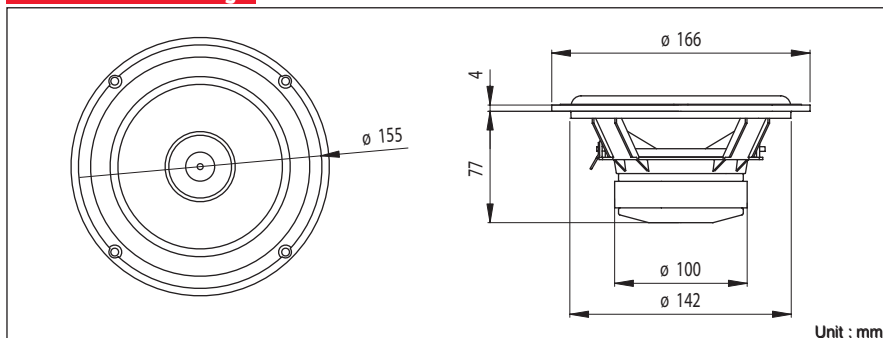
- High power handling
- Zamak basket
- Aluminium phase plug



Frequency Response / Impedance



Mechanical Drawing



Specifications

Nominal power	100 W
Maximum power	200 W
Sensitivity	92 dB
Cone	K2 Composite Sandwich®
Surround	Butyl
Nom. impedance	4 ohms
DC resistance	2.9 ohms
VC diameter	40 mm 1.57 in
VC height	15 mm 0.58 in
Former	Kapton®
Layers	2
Wire	Copper
Inductance	0.2 mH
Xmax	4.5 mm 0.18 in
Magnet d x h	100 x 18 mm 3.93 x 0.71 in
Magnet weight	564 g 1.24lb
Flux density	1.1 T
Gap height	6 mm 0.23 in
Net weight	1.6 kg 3.52 lb

Parameters

Fs	68.88 Hz
Vas	8.64 l 0.30 Ft³
Qts	0.65
Qes	0.7
Qms	9.13
Re	2.93 ohms
Sd	132.73 cm² 20.57 in²
Cas	6.15E-08 m⁵/N
Mas	86.79 kg/m⁴
Ras	4113.93 ohms.ac
Cms	3.49E-4 m/N
Mms	15.29 g 0.033 lb
Rms	725 g/s
Ces	552.02 mF
Les	9.67 mH
Res	38.22 ohms
BI	5.26 N/A
SPL	87.9 dB/W/m

Suggested application

Load	V (l)	Fb (Hz)	F-3 (Hz)	Ql
Sealed	30	-	70	7
Vented	-	-	-	-
Sealed	-	-	-	-

Focal® is a trademark of Focal-JMLab®

BP 374 - 108, rue de l'Avenir - 42353 La Talaudière cedex - France - Tel. +33 4 77 43 57 00 - Fax +33 4 77 43 57 04 - www.focal-fr.com